

SOLVING STRUCTURAL HUNGER FUND

FUND STRATEGY

***The Solving Structural Hunger Fund** is an actively managed giving fund that unites the brightest Christian innovators and capital providers to identify and catalyze breakthrough solutions to structural hunger.*

***Our Niche** - We focus on bold, upstream solutions to structural hunger that help to shape the operating environment for businesses on the ground.*

***Isaiah 58:10-11** - "If you spend yourselves in behalf of the hungry and satisfy the needs of the oppressed, then your light will rise in the darkness, and your night will become like the noonday. The Lord will guide you always."*

Table of Contents

<u>Executive Summary</u>	3
--------------------------------	---

Why

<u>The Problem: Understanding Poverty</u>	4
---	---

<u>A Biblical Framework: Hunger</u>	5
---	---

How

<u>Solving Structural Hunger Fund Purpose</u>	6
---	---

<u>The Team</u>	6
-----------------------	---

<u>Mapping Hunger</u>	7
-----------------------------	---

<u>The Strategy</u>	8
---------------------------	---

<u>Defining Success</u>	8
-------------------------------	---

<u>Current Portfolio</u>	9
--------------------------------	---

What

<u>Fund Identity</u>	9
----------------------------	---

<u>Allocation Philosophy / Q&A</u>	10
--	----

Get Involved

<u>Giving to the Fund</u>	11
---------------------------------	----

Executive Summary

The **Solving Structural Hunger Fund** is an actively managed giving fund that unites the brightest Christian innovators and capital providers to identify and catalyze breakthrough solutions to structural hunger.

Why Hunger

Hunger is the fault line beneath countless crises—it drives sickness, desperation, instability and exploitation. Yet 378 million people face **structural hunger** caused by solvable problems: low ag productivity, broken supply chains, and weak purchasing power. When hunger is solved, the scaffolding of suffering begins to collapse.

Why This Approach

Many well-intentioned efforts fail not for lack of passion or ideas, but for lack of clear strategy, coordinated execution, and flexible tools. The Solving Structural Hunger Fund exists to close that gap—uniting the brightest minds under a shared strategy and deploying capital creatively to catalyze solutions to structural hunger.

Where We Start

The Fund's initial geographic focus is **Anchor** countries in **Anglophone Sub-Saharan Africa**, where:

- 70 million people face structural hunger, representing the hungriest population on the planet
- Demographic tailwinds and macroeconomic environments make the problem solvable
- The team brings **110+ years of experience** building and investing in the region

How We Work

In community, the Fund Manager, Investment Committee, Board of Advisors, and investment partners:

1. Map the problem
2. Identify key leverage points
3. Structure catalytic deals
4. Monitor, evaluate, and adjust
5. Catalyze solutions until market forces take over

Strategic Focus Areas

The Fund targets key leverage points across four strategic areas:

- **Supply** - Increasing local productivity
- **Logistics** – Smoothing supply chains
- **Demand** – Providing affordable access to healthy foods
- **Enabling Ag Productivity** – Infrastructure that allows quality food to be produced locally at scale

Capital Philosophy

The Solving Structural Hunger Fund is a **Donor-Advised Fund**. Donor capital is taken in and the fund manager, along with the investment committee and board of advisors deploy **risk-on, flexible, smart capital** utilizing whichever financial instrument(s) most effectively catalyzes the solution. The Fund may deploy donations or investments, but all returns recycle back into the Fund—never returned to donors. The Fund is not a passive allocator, it is an **active partner** and **dealmaker**, working with founders and co-investors to structure solutions that scale.

What Success Looks Like

Success is not perfection—it's proof. We define success as proving or disproving theories of change and catalyzing solutions until they reach a self-sustaining tipping point.

The Problem: Understanding Poverty

Defining Poverty

Poverty is more than a lack of resources—it's the loss of opportunity to live and work as God designed.

Because poverty affects the whole person—heart, mind, and body—the poor often describe it less by what they lack and more by how it makes them feel. When meaningful work is absent, dignity erodes.

Aside from the gospel, providing meaningful work that solves core problems like hunger—wrapped in the love of the Holy Spirit—is the greatest gift we can give the poor and the most powerful way to address poverty.

Historical Successes + Failures in Solving Poverty

In 1960, ~60% of the world was living in poverty. In stunning success, over the last 66 years, that number has dropped to just 10%. But while some economies have rapidly developed, others have been left behind.

Africa accounted for just ~20% of the world's poor in 1960, but is expected to account for 80% by 2030. Acknowledging the oversimplification, a core reasoning for the disparity is that other economies, like China, pursued market-based economic development, while Africa pursued aid-based economic development.

As seen in the below graphic, Africa was wealthier and twice as productive as China in 1960, but while China has almost eradicated extreme poverty from their country and increased their GDP/capita by 17.5x, Africa still has mass amounts of extreme poverty and has had stagnant productivity for the last 66 years. When people are nourished, they have capacity to grow, create, and innovate. Solving structural hunger is paramount for advancing Christ-centered economic development.

Comparison of Africa & China — 1960 vs. 2024

	AFRICA		CHINA	
Category	1960	2024	1960	2024
Population in Poverty	~75%	~46%	~85%	<2%
GDP Per Capita (INFLATION-ADJUSTED USD)	\$1,600	\$1,800	\$800	\$14,000

Key Ingredients to Solving Poverty

Market-based solutions have consistently proven to drive economic development and reduce poverty. Accordingly, this fund prioritizes marketplace solutions to structural hunger—because sustainable supply chains are foundational to long-term economic growth, opportunity, and dignity.

Yet many global challenges persist not for lack of passion or ideas, but for lack of clear strategy, coordinated execution, and flexible tools. Breakthrough outcomes require all three working together

The Solving Structural Hunger Fund exists to close that gap—uniting the brightest minds under a shared strategy and deploying capital creatively to catalyze solutions to structural hunger.

A Biblical Framework: Hunger

Our Why: *We believe God hates when his children go hungry. From his design of humans to his provision of mana in the desert to Jesus' words to his disciples, it is clear that both physical and spiritual nourishment are vital to be all God made his people to be. Yet, 673 million people are still physically undernourished globally, with 378 million facing structural hunger - a systemically solvable problem. Our mission is to identify and catalyze scalable solutions to structural hunger, so God's children can live healthy, productive lives, and be all he made them to be.*

God hears the cry of the hungry.

"He upholds the cause of the oppressed and gives food to the hungry." - Psalm 146:7

Hunger is often a sign of broken systems.

"An unplowed field produces food for the poor, but injustice sweeps it away." - Proverbs 13:23

Provision comes through work.

"The Lord God took the man and put him in the Garden of Eden to work it and take care of it." - Gen 2:15-17

"Let him labor, doing honest work with his own hands, so that he may have something to share with anyone in need." - Ephesians 4:28

God calls his people to help the hungry.

"Is not this the fast that I choose... to share your bread with the hungry?" - Isaiah 58:6-7

When we address physical hunger, we reflect the character of the One who satisfies spiritual hunger.

"Then the King will say to those on his right, 'Come, you who are blessed by my Father; take your inheritance... For I was hungry and you gave me something to eat... Then the righteous will answer him, 'Lord, when did we see you hungry and feed you?... The King will reply, 'Truly I tell you, whatever you did for one of the least of these brothers and sisters of mine, you did for me.'" - Matthew 25:34-40

"I am the bread of life; whoever comes to me shall not hunger." - John 6:35

The Lord feeds the hungry, we are merely his partners.

"The disciples came to him and said... 'Send the crowds away, so they can go to the villages and buy themselves some food.' Jesus replied, 'You give them something to eat.' 'We have here only five loaves of bread and two fish,' they answered. 'Bring them here to me,' he said... Taking the five loaves and the two fish and looking up to heaven, he gave thanks and broke the loaves. Then he gave them to the disciples, and the disciples gave them to the people. They all ate and were satisfied, and the disciples picked up twelve basketfuls... The number of those who ate was about five thousand men." Matthew 14:15-21

There will be a day when hunger does not exist. Until then, we pray and work for earth to be like heaven.

"Never again will they hunger... 'For the Lamb at the center of the throne will be their shepherd' - Rev 7:16-17

"Your kingdom come, your will be done, on earth as it is in heaven." - Matthew 6:10

Fund Purpose

The Solving Structural Hunger Fund exists to unite the brightest Christian innovators and capital providers to identify and catalyze breakthrough solutions to structural hunger.

The scale of hunger is immense. 378 million people globally still face structural hunger. Addressing a problem of this magnitude requires bold, scalable solutions, and uncommon collaboration.

Together, we map the problem, identify key leverage points, and work with innovators to unlock them, leveraging our capital to strategically catalyze solutions. Our focus is on developing strong local agricultural value chains. Everything we do has material spiritual integration, to ensure we are meeting both physical and spiritual needs.

The Team

The team is uniquely positioned with 110+ years of experience building and investing in Sub-Saharan Africa.

Fund Manager



Zac Sicher
Fund Manager
Former Trader at Goldman Sachs

Investment Committee



Mezuo Nwuneli
Sahel Capital +
Nigeria Commodities Board



Efosa Ojomo
Author, Prosperity Paradox &
Kellogg Professor

Board of Advisors



Gavin Gramstad
Nobel Peace Prize Winner
Hunger, 2020



Iyinoluwa Aboyeji
3x Unicorn Founder



Mandla Nkomo
CEO, Partners in Food
Solutions



Charity Wallace
Former Executive at US DFC,
White House, State Dept



Mezuo Nwuneli
Sahel Capital +
Nigeria Commodities Board



Efosa Ojomo
Author, Prosperity Paradox &
Kellogg Professor



Reg Allat
CEO, Global Excel
Management



Joel Bryce
-10 Years Investing in Ag in
Africa



Tim Shirk
Head of Tony Robbins 100
Billion Meals Program



Kwami Williams
MIT & NASA Turned
Superfood Producer in Africa



Dale Dawson
Special Advisor to President
Kagame, Rwanda



Daryl Heald
CEO, Generosity Path



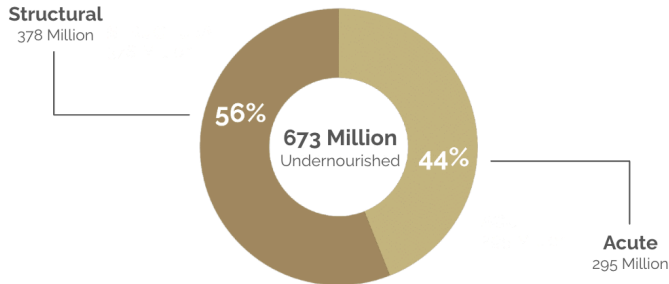
Layne Hoekema
Sr Partner, Blue Trust



David Allman
Founder & Chairman, Regent
Partners

**More members will be added to the Investment Committee and Board of Advisors over time.*

Mapping Hunger

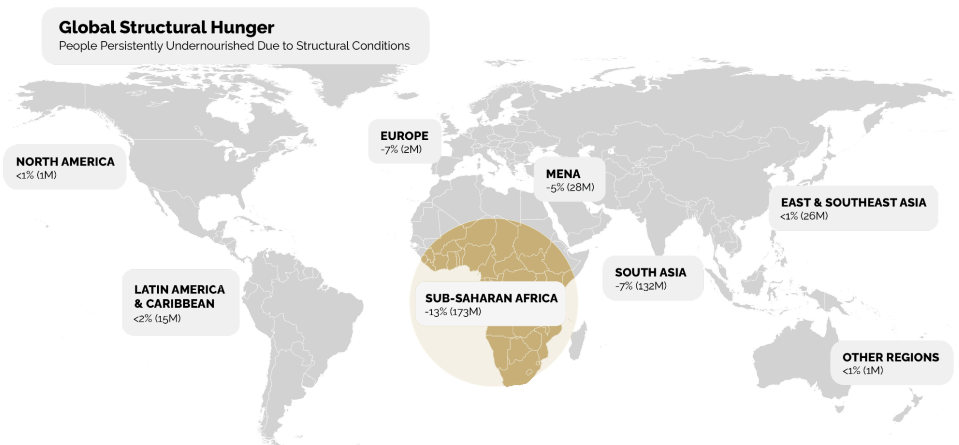


673 million people — 8.2% of the world's population — are undernourished. Of those, 295 million face acute hunger driven by war, drought, and economic collapse. But **378 million** suffer from structural hunger — caused by low agricultural productivity, disconnected supply chains, and low income or purchasing power.

This SWGP Fund focuses on **structural hunger** — the systemically solvable portion of the crisis.

Sub-Saharan Africa is the epicenter, with 173 million people, ~13% of its population, facing structural hunger. Here, the greatest need intersects with the greatest long-term opportunity. This is our starting point.

The below 7 **Anchor** markets in **Anglophone** countries account for **40% of all structural hunger** in Sub-Saharan Africa (~70 million people). Furthermore, shared language, legal alignment, friendly business environments and key relationships create strong execution capacity that allows them to act as corridors to the rest of the continent.



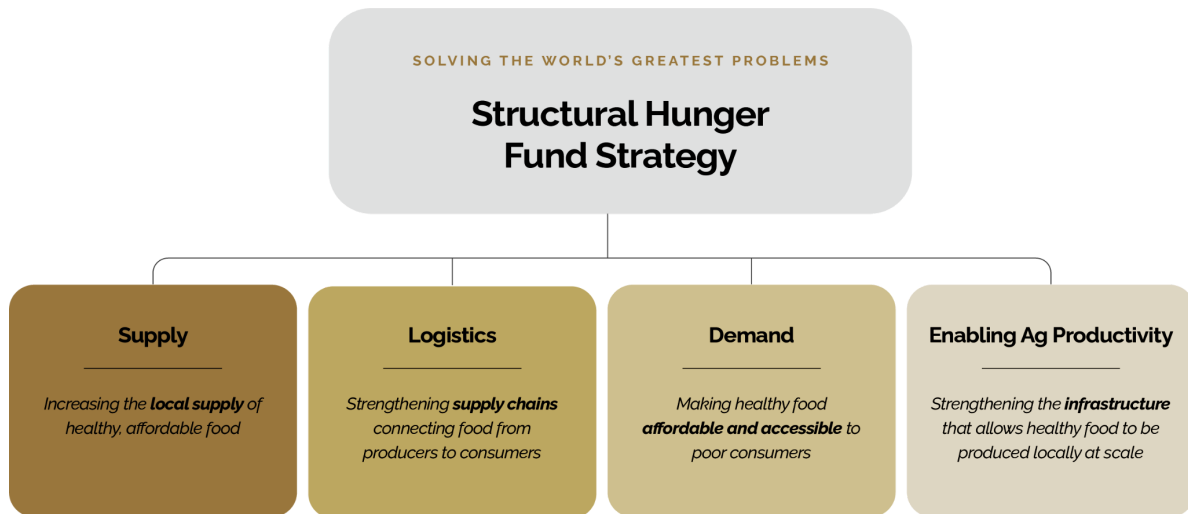
ANCHOR MARKETS	SECONDARY MARKETS	TERTIARY MARKETS
<ul style="list-style-type: none"> • Nigeria • South Africa • Kenya • Ghana • Rwanda • Zambia • Eswatini 	<ul style="list-style-type: none"> • Tanzania • Uganda • Sierra Leone • Liberia 	<ul style="list-style-type: none"> • Zimbabwe • Botswana • Malawi • The Gambia • Lesotho

Summary: The Fund targets solving **structural hunger** in **Anchor** countries in **Anglophone Sub-Saharan Africa**.

The Strategy

The team will identify key leverage points within each vertical and catalyze solutions accordingly.

Core Thesis: The solution to Africa's hunger problem lies within the very soil of the continent itself. Africa holds 60% of the world's remaining arable land, yet imports \$50bn of food annually and only exports ~5% of the global food supply - imported food costs more and devalues currencies. The SWGP Hunger Fund exists to strengthen the supply chains within the continent, ensuring every consumer can consume healthy food at affordable prices.

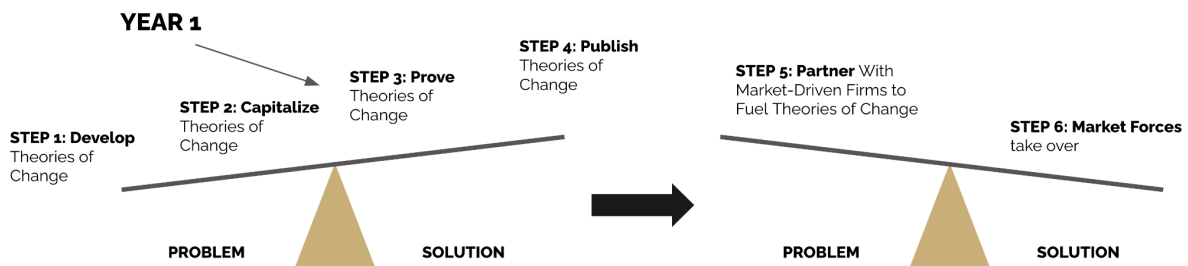


Defining Success

The **Ultimate Metrics** are:

- **Food Supply** - The quantity of food produced, transported, and delivered to the market versus total consumption needed.
- **Population Nourished** - The percentage of the population with reliable and affordable access to nutrition year-round.

In working towards those goals, we will often have to work 2-3 steps prior to the ultimate metrics. In those cases, success is defined by proving or disproving theories of change and scaling the winners until commercial markets can carry them forward.





Hamara



IMMEDIATE IMPACT PROJECTIONS (1YR)

583K

Chickens to Market

4.08M

Servings of Protein to Market

12 cents

Cost Per Serving

\$2.95M

Increase to local GDP

100

Number of Farmers

600

Number of Operators

CATALYTIC IMPACT

By creating and proving out a financial structure that provides market-rate returns for smallholder farming in Africa, we can catalyze hundreds of millions of dollars (or more) of food produced, transported and consumed, at affordable and accessible prices.

SPIRITUAL INTEGRATION

Hamara is a faith-driven company that integrates biblical principles into farmer training and seeks to demonstrate and share the gospel through the way it serves farmers, suppliers, and other partners throughout the value chain.

LEVER(S) MOVED

- 1) Financing** - Commercial agriculture will not scale across Africa unless it is commercially viable. This is solved by SWGP's new financial structure.
- 2) Logistics** - Commercial agriculture needs dependable infrastructure. This is solved by the Hamara Platform

ABOUT HAMARA

Hamara is building the infrastructure backbone for smallholder agriculture in Africa. Through a decentralized, blockchain-enabled platform, they transform fragmented smallholder production into coordinated, demand-driven supply, allowing market forces to align farmers, input providers, logistics operators, and buyers without vertically integrating the value chain. Offtakers place orders for chickens, farming clubs bid to fulfill them, and investors fund high-quality chicks and feed. Farmers raise the birds, logistics providers deliver them for processing and onward to the offtaker, and all participants—including the investor—are paid upon completion.

Hamara is the only company we've met that has effectively integrated smallholder farmers into commercial value chains.

THE OPPORTUNITY

Hamara has built an extraordinary platform, but the value chains cannot function without sustainable working capital to finance inputs. SWGP's role is not merely to meet an immediate funding need, but to help catalyze an entirely new engine of capital for African agriculture.

OUR INVESTMENT

SWGP deployed **\$600,000** through a one-year revenue share agreement to help create and prove a financial product capable of delivering market-rate returns in smallholder farming. If successful, this structure could unlock hundreds of millions—and ultimately billions—of dollars for agricultural value chains across Africa, making nutritious food more affordable and accessible for millions of people.

OBJECTIVES

- 1) Solve immediate hunger needs** by filling market demand for protein
- 2) Prove a catalytic financing structure** that delivers market-rate, risk-adjusted returns for smallholder agriculture to attract exponentially more capital
- 3) Prove a decentralized platform** can align independent participants into scalable, commercial value chains
- 4) Trailblaze a new sustainable path** for traditional "aid money" to fund agriculture value chains



B2R Farms



IMMEDIATE IMPACT PROJECTIONS (1YR)

24

Farm Fellows Paid

26,667

Farmers Trained

\$3.75

Cost Per Farmer Trained

100-250%

Yield Increase

40,000

People Moved Towards Food Security

CATALYTIC IMPACT

By preparing both the people and land to produce at scale, SWGP is helping to lay the groundwork for a highly efficient and productive agricultural sector in Rwanda that can not only feed themselves, but surrounding countries as well.

SPIRITUAL INTEGRATION

Farmers are trained using biblically grounded agricultural principles, with clear opportunities for gospel conversations and discipleship throughout the process. The goal is not only to increase food production, but to help communities flourish both physically and spiritually.

LEVER(S) MOVED

- 1) Human Capital** - To produce at high-capacity, farmers need to be trained in how to maximize yields with the tools they have.
- 2) Food Supply** - To achieve food security, the quantity of food produced in Rwanda must increase

ABOUT B2R FARMS

Bridge2Rwanda (B2R) Farms partners with Foundations for Farming and the Government of Rwanda to equip smallholder farmers with proven conservation agriculture practices that consistently increase yields by 100–250%. The Rwandan Government recently created national Food Basket Sites (FoBaSi) where they want to concentrate a majority of the agriculture activity and asked B2R Farms, an independent organization, to train the farmers in how to increase yields so that the farmers and land are ready to produce enough food to feed Rwanda and eventually export to the rest of the world.

THE OPPORTUNITY

Approximately 3 million people in Rwanda remain structurally hungry because agricultural productivity is too low to meet the nation's food demands. Yet, Rwanda offers the most business friendly environment on the continent (outside of Mauritius) to build scalable businesses, is large enough geographically to prove a scalable solution, and small enough to solve the problem within 5-10 years. Rwanda provides an incredible opportunity to demonstrate a scalable model for achieving national food security in Africa.

OUR DONATION

SWGP provided a **\$100,000** matching grant to fund 24 Farm Fellows, who will train approximately 26,667 farmers in conservation agriculture practices. This investment represents Phase I of a broader Rwanda strategy aimed at eventually connecting these farmers into holistic value chains that provide access to markets, financing, logistics, and other critical services.

OBJECTIVES

- 1) Solve immediate hunger needs** by helping farmers increase their yields so they can move from starvation to sustainably providing for their family.
- 2) Prepare the people and land for food systems** by training farmers in how to maximize yields and ensuring the land is fertile enough to grow at scale.
- 3) Begin relationships with a key partner in the region**, as SWGP seeks to increase activity in Rwanda.

Fund Identity

Core Identity

Unashamedly Christian | **Unashamedly Pioneers**

Unashamedly Christian - Everything we do is Under God's Power and for His Glory, not ours.

Unashamedly Pioneers - We are pioneering a new way to solve problems.

- Actively managed funds with teams focused relentlessly on solving the problem.
 - Capital deployed in new and creative ways to maximize impact.
-

Problem-Solving Strategy

Map the Problem | Identify Key Leverage Points | Structure Deals + Solve Problems | Measure Progress

Deal Structuring

We're more than capital allocators - we're dealmakers. We map the problems, identify key leverage points, and structure deals with other capital partners in the field to have a catalytic impact on creating good jobs. Our capital is not the end, it's the starting point.

Fund Structure

Donor Advised Funds - We use DAFs because they are the *most tactical structure* for solving problems. Donor capital goes into funds → Capital deployed in ANY manner that solves the problem.

Team - Fund Manager | Investment Committee | Board of Advisors | Deep Community | SWGP Backbone Team.

Capital Characteristics

Risk-On | **Flexible** | **Smart**

Risk On - We take risks to solve problems the market may not be willing to take.

Flexible - We deploy capital in whichever manner solves the problem most effectively.

Smart - We strive to be a market leader both in where we invest and how we structure deals.

Key Requirements

Scalable Solutions | **Solvable Problems**

We deploy capital towards scalable solutions to solvable problems.

Defining Success

We define success as **catalyzing solutions** until they reach a self-sustaining tipping point.

Allocation Philosophy / Q&A

What is the capital's purpose? The Solving Structural Hunger Fund deploys capital to scale solutions to hunger.

What is the fund's structure? *Donor Advised Fund (DAF)* – capital is donated into the fund and will not be returned. All returns made from investments will be recycled back into the fund. The Fund charges a 0% management fee; the op-ex is covered separately by donors so that 100% of donations flow directly into the field.

What type of capital do you deploy? *Any.* The Fund may deploy equity, debt, donations, profit-share structures, or novel instruments where needed. Each investment will carry a defined return expectation that balances impact with scalability. Concessionary capital must demonstrate a credible path to market-rate returns. The Fund has a strong preference for collaborative partnerships over individual grant-making or investing.

Portfolio construction? *We focus on conviction over diversification and impact over capital preservation.*

What is your risk tolerance? *High.* The Fund will underwrite elevated risk where success would produce catalytic impact. We may lose money, we may fail, but we will not be the servant with 1 talent who hid what he had out of fear of his master. We are stewards of *His* capital and believe He wants us to take risks for *His* children.

What stage companies/organizations do you focus on? *Any.* The Fund will likely allocate to early-stage companies, organizations, and new projects due to its risk tolerance, but may also back new strategies or innovations within established organizations.

What is the fund's time horizon? *Perpetual* at the Fund Level. Investment-specific time horizons set by the IC.

What is your geographical focus? For at least the first year, allocations will be limited to Anchor countries in Anglophone *Sub-Saharan Africa* or entities with material impact in the region.

What are your investee qualifications?

Preference for African founders, though not required. All investees must demonstrate:

1. Clear potential for catalytic impact on hunger
2. Excellent team strength for the current stage
3. Capacity and willingness to scale leadership and operations

How do you define success? The Fund's three core metrics are: 1) the number of people shifting from undernourished to nourished, 2) the number of farmers moving from starvation to sustainability to surplus, and 3) the economic growth created by the increase in value of goods going through the value chain. In reaching those goals, we will often move 2-3 steps above the end goal to ensure the infrastructure exists to get to those metrics. There, success is proving or disproving theories of change and catalyzing them until market forces take over.

How will you communicate impact? The Fund will host Quarterly Update Calls + write an Annual Impact Report.

What is SWGP's value add? The Fund is an active partner, supporting portfolio entities through capital infusion, deal structuring, strategic guidance, operational expertise, and access to networks.

What is your return framework? No fund-level return target. Investments will have a context-specific target.

What is the fund's spiritual integration framework? Each investment must demonstrate *material spiritual integration*, as determined by the Investment Committee, calibrated to the context of the opportunity.

Giving to the Fund

When you give, your capital joins a coordinated effort to solve structural hunger, because solving big problems requires coordinated generosity, not isolated giving.

Give once or over time. Consistent capital increases speed, strengthens execution, and allows the Fund to act with conviction.

The Fund is a Donor-Advised Fund (DAF) housed at TrustBridge Global. U.S. donations are tax-deductible. International eligibility varies by jurisdiction.

100% of contributions are deployed. Operational costs are covered separately.

Giving Options

1. **Direct:** Credit card, ACH, or wire: <https://solving.org/hunger/>
2. **Donor-Advised Fund (DAF):** Recommend a grant through your DAF.
 - a. Supported partners include National Christian Foundation, TrustBridge, Blue Trust, WaterStone, The Signatry, and others.
 - b. Instructions: <https://solving.org/daf/>
3. **Non-Cash Assets**
 - a. We accept:
 - i. Appreciated securities
 - ii. Business interests
 - iii. Real estate
 - iv. Royalties, IP, precious metals
 - v. Estate gifts, retirement assets, and other structures

International

International donors can give through local structures or global platforms. TrustBridge facilitates cross-border giving. Tax treatment varies by country.

Recurring

Monthly, quarterly, or annual contributions. Enables planning. Increases speed. Supports conviction-led deployment.

Custody

Held by TrustBridge (International Generosity Foundation Trust). Provides legal and operational infrastructure for global deployment.

For more information: <https://solving.org/how-to-give/>